

Parkheath

Sold on Service

Savernake Road NW3
£3,500 PCM (£808 per week) - Band F



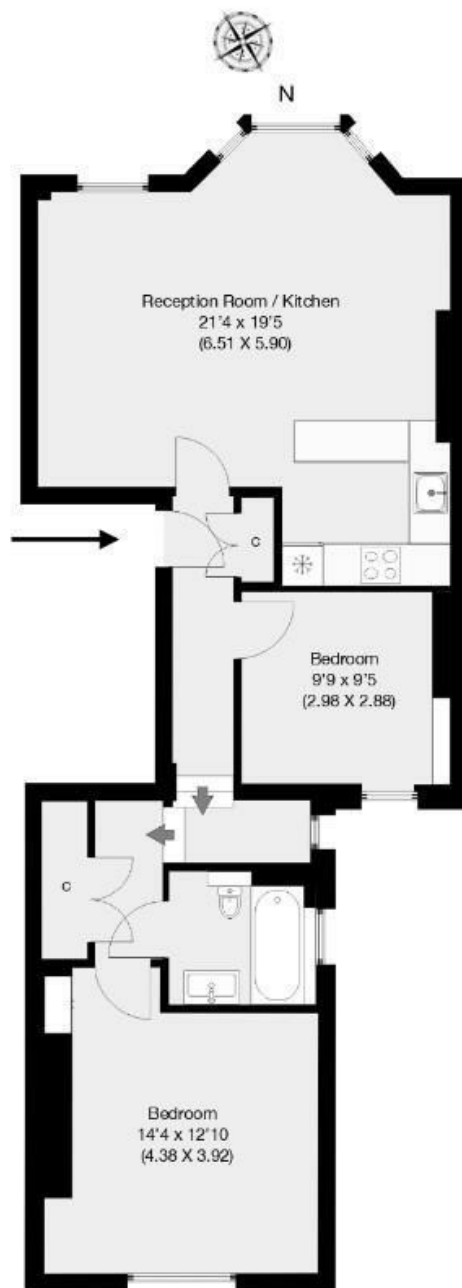
Stunning newly refurbished 2 bedroom apartment
Finished to a high contemporary standard
Sleek open plan kitchen with all appliances
2 good size double bedrooms
Perfectly located adjacent to Hampstead Heath

Entire 1st floor in redbrick period conversion
Wood floor reception room with dual aspect windows
Luxurious 3 piece bathroom
Utility cupboard and good storage
EPC Rating C, Council Tax: Camden band E

Belsize Park Office 020 7431 3104



Savernake Road, London, NW3
Approximate Gross Internal Area 70.87 sqm / 762 sqft



First Floor

THIS FLOOR PLAN IS PRODUCED FOR PARKHEATH SUBMITTED BY **ARCHIMEDIA** web: www.archi-media.co.uk

Whilst every attempt has been made to ensure the accuracy of the floor plan contained here, measurements of doors, windows and rooms are approximate and no responsibility is taken for any error, omission or misstatement. These plans are for representation purposes only and should be used as such by any prospective buyer or lease. Specifically no guarantee is given on the gross internal floor area of the property if quoted on this plan and any figures given is initial guidance only and should be treated as such.

The particulars do not constitute part of an offer or contract. The particulars, including text, photographs and plans, are for the guidance only of prospective purchasers/tenants and must not be relied upon as statements of fact. The descriptions provided therein represent the opinion of the author and whilst given in good faith should not be construed as statements of fact. Nothing in these particulars shall be deemed a statement that the property is in good condition or otherwise or that any services or facilities are in good working order. All measurements are approximate